



NEWSLETTER 8

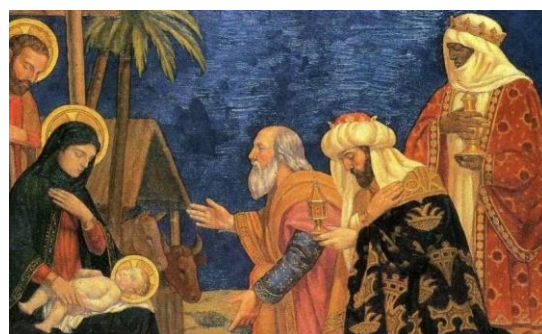
15.1.24



Dear Parents and Carers,
Happy New Year! A warm welcome back after the Christmas break. After nearly two weeks in school, the children have settled back into their learning extremely well – we are all very impressed with how they have demonstrated our school values. We talked about Epiphany in our Gospel assembly last week. We recall the arrival of the three kings who visited the baby Jesus.

If you and your child wish to learn more about this important date in the church calendar, click on the BBC Newsround link here:

[Epiphany: What is Epiphany and how is it celebrated? - BBC Newsround](#)



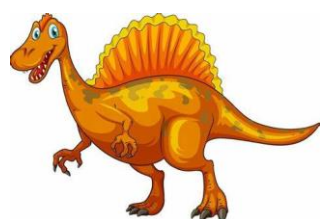
Following Epiphany on January 6th, we return to 'Ordinary Time' in the church calendar, which is marked by the colour green.

Curriculum newsletters have been sent out to inform you of your child's learning this term.

May God bless you all,

Mark Hilliam

Mr Mark Hilliam, Headteacher



Can you help our school on Census Day – next Thursday 18th January 2024?

We have to provide information to the Department for Education (DfE), which dictates how much funding the school receives. As you know, the more funding we receive, the better educational provision we can provide for your children.

One of the key funding categories is how many children take up **Universal Free School Meals (UFSM)** on census day. All children in Reception, Year 1 and Year

2 are entitled to a free meal every day. We always try to ensure that on census day one of the more popular meal choices is available. On this day, our caterers (AIP) are laying on a special Dinosaur Day!

We would like your help to try and encourage your child to take up the UFSM offer and if at all possible next Thursday, as this will ensure our school receives the best possible funding for the year.

School uniform

A reminder that our school uniform is white shirt/blouse (or polo shirt) and tie, with grey trousers/skirt/pinafore. Shoes should be black or grey – no boots or trainers. PE kit is our yellow t-shirt, dark grey hoodie and black shorts/tracksuit bottoms. Please ensure that your child is wearing the correct uniform. Long hair should be tied back and loop earrings are not permitted. For more information click here:

[St Augustine of Canterbury Catholic Primary School - Uniform Information - Please note new PE kit.](http://staugustinedownend.org.uk)
(staugustinedownend.org.uk)

AFTER SCHOOL CLUBS

This term we will continue to offer a range of clubs as part of our commitment to wider curriculum enrichment. Teacher led clubs will focus on additional 'booster' catch up sessions, but we do have a range of externally provided clubs.



Signature Sports will also be running the following clubs:

Tuesdays: Multi-Sports (Years Rec, 1, 2)
Wednesdays: Dodgeball (Years 3, 4, 5, 6)
Thursdays: Football (Years 1, 2, 3)

Parents can book their child a

place via the website www.signaturesportscoaching.co.uk

All external clubs started this week and will run until the end of the term.

Clifton Cathedral

CLIFTON CATHEDRAL JUNIOR CHOIR

The Clifton Cathedral Junior Choir is a childrens choir sponsored by Clifton Cathedral's Music Service.

Membership of the choir offers children:

- the opportunity to develop their musical and vocal skills, particularly sight-singing
- the chance to make new friends with similar interests whilst having fun and performing a wide choral repertoire to a high standard.

For further details please contact the Cathedral Organist and Junior Choir Director: Stephen Bryant
Email: juniorchoir@cliftondiocese.com

Clifton Diocese Safeguarding policy - www.cliftondiocese.com/ safeguarding
Clifton Cathedral Diocese Trustees Registered Charity No. 122877
Registered Office: St Augustine, South Bristol Road, South Bristol, Bristol BS3 7PT

The STEM factory are running a coding club, which started on the 11th January.

The STEM Factory @St Augustine's Primary School



What: Coding Video Games
Pt1
5, 45 min sessions
When: Thursdays,
08:00-08:45
Start Date: 11/01/24

Who: Anyone in KS2
Price: £39.99



An introduction to programming Video Games. We will be following the Design Thinking process so pupils will design their own maze game with main characters, rewards and enemies. They will then write the code for each element and finally test their game on handheld consoles. By watching how others play their game and listening to feedback they will then be able to refine and improve their game.

For further information and to register your interest, visit:

thestemfactory.co.uk

**An opportunity
from South Glos
parent carers:**

SGPC
South Glos Parent Carers

Our Community
for Positive Change
www.sgpc.org.uk

South Glos Parent Carers CIC 8364673 (not for profit), Poole Court, Poole Court Drive, Yate, BS37 5PT

This may be helpful for some of your school families. We have an online session with an Occupational Therapist running as part of our Core Offer on Developmental Coordination Disorder (Dyspraxia).

It is free for parents to attend. <https://www.eventbrite.co.uk/e/understanding-dcddyspraxia-online-with-caroline-jacques-ot-tickets-773638963967?aff=oddtcreator>

Ash Class Parents:

A polite reminder for all parents of children in Ash (Reception) class: please supervise your younger children and do not let them play with the Reception equipment. We kindly ask that if your child does play with the toys, etc... that they are returned to the correct place. Thank you, from Miss Blackford.

Dates for your diary – more dates will be added as they arise:

Wednesday	17 th	January	Chaplaincy training day (school chaplains) postponed
Wednesday	17 th	January	Kilve Court talk to parents of Hazel Class, 3:40pm
Monday	22 nd	January	Oak Class assembly, pm (details to follow)
Tuesday	23 rd	January	Hazel Class mass, in school hall (time to be confirmed)
Tuesday	30 th	January	Mathstermind 2, 3:30pm
Friday	2 nd	February	Maple Class assembly, pm (details to follow)
Friday	9 th	February	Last day of term 3
Monday	12 th	February	HALF TERM
Monday	19 th	February	'Rags to Riches' clothes collection fundraiser (PTFA) starts for 2 weeks
Tuesday	27 th	February	Willow Class mass, in hall pm (details to follow)
Wednesday	6 th	March	Stardust Musical for Hazel Class, St George's Hall, 6:30pm (see below)
Wednesday	6 th	March	Lifeskills trip for Oak Class, 12:45-3pm
Friday	8 th	March	Hazel Class assembly, pm (details to follow)
Tuesday	12 th	March	Spellathon 2, 2:30pm
Thursday	14 th	March	Road Safety Workshop Hazel Class / Good Spot Workshop Maple Class
Tuesday	19 th	March	Maple Class liturgy, in classroom, pm
Tuesday	19 th	March	Parents Evening 1, 3:40pm-6:30pm
Thursday	21 st	March	Parents Evening 2, 4pm-7pm
Thursday	28 th	March	INSET day 4, school closed to pupils
Friday	29 th	March	GOOD FRIDAY – BANK HOLIDAY (school closed)
Monday	1 st	April	EASTER HOLIDAY
Monday	15 th	April	Children return
Wednesday	24 th	April	Kilve Court residential for Hazel Class (return on Friday 26 th)
Friday	26 th	April	Birch Class assembly pm, (details to follow)
Tuesday	30 th	April	Elm Class liturgy in class (pm)
Tuesday	7 th	May	Mathstermind 3, 2:30pm
Friday	10 th	May	Willow Class assembly pm, (details to follow)
Monday	14 th	May	SATs week for Oak Class (Year 6)
Tuesday	21 st	May	Ash Class liturgy, pm
Monday	27 th	May	HALF TERM
Friday	21 st	June	Elm Class assembly (details to follow)
Tuesday	2 nd	July	Spellathon 3, 2:30pm
Monday	8 th	July	INSET Day 5 – school closed to all pupils
Friday	12 th	July	Ash Class assembly (details to follow)
Tuesday	23 rd	July	School finishes for the Summer